

Plant List							
ID	Botanical Name	Common Name	Pot Size	Mature Height	Mature Spread	Qty	Remarks
Trees							
CFW	Corymbia ficifolia 'Wildfire'	Dwarf Flowering Gum	45L	8m	6m	16	Compensatory Planting
EP	Eucalyptus punctata	Grey Gum	45L	25 - 30m	6 - 10m	5	Compensatory Planting
TL	Tristanopsis laurina	Water Gum	45L	6-8m	6m	11	Compensatory Planting
Shrubs							
AAM	Acmena 'Allyn's Magic'	Allyn's Magic	200mm	1m	1m	28	
ACS	Acmena 'Cherry Surprise'	Cherry Surprise	200mm	3m	1m	74	
BVN	Baeckia virgata nana	Dwarf Baeckia	200mm	1m	1m	10	
CRA	Callistemon 'Red Alert'	Red Alert	200mm	2 - 2.4m	1 - 2m	129	
DV	Dodonaea viscosa 'Purpurea'	Purple Hop Bush	200mm	3 - 5m	2.0 - 3.5m	33	
GJ	Grevillea australiflora 'Jubilee'	Jubilee Grevillea	200mm	1m	1m	6	
GHG	Grevillea 'Honey Gem'	Honey Gem	200mm	3 - 5m	3.5 - 6m	13	
GMT	Grevillea 'Mt Tamboritha'	Woolly Grevillea	140mm	0.3 - 0.45m	1.2 - 2.0m	23	
WFZ	Westringia frutescens 'Zena'	Zena Compact Native Rosemary	200mm	1m	1m	5	
WM	Westringia mundi	Mundi	200mm	0.6m	1.5m	15	
Ground Covers							
CG	Carpobrotus glaucescens	Pigface	140mm	0.0 - 0.3m	1.2 - 2.0m	8	
CCI	Casuarina 'Cousin It'	Casuarina 'Cousin It'	200mm	0.6m	3 - 3.5m	280	
DB	Dianella 'Breeze'	Breeze	140mm	0.45 - 0.6m	0.6 - 0.9m	34	
GGC	Grevillea 'Gold Cluster'	Gold Cluster	200mm	0.6m	1m	20	
Grasses							
LT	Lomandra 'Tanika'	Dwarf mat rush	140mm	0.45 - 0.6m	0.6 - 0.9m	31	
LL	Lomandra longifolia	Spiny-headed Mat-Rush	tube	0.75 - 0.9m	0.9 - 1.2m	145	
PR	Pennisetum 'Rubrum'	Purple Fountain Grass	140mm	0.6 - 0.75m	0.3 - 0.6m	20	

Existing Trees	H.S.	Condition	Action	Crown Projection
11908. <i>Pyrus calleryana</i> (Ornamental Pear)	8.4	Good	Retain	
11702. <i>Cinnamomum camphora</i> (Camphor Laurel)	14.6	Good	Remove	47.492m ²
80604. <i>Corymbia maculata</i> (Spotted Gum)	22.8	Good	Retain	
80430. <i>Corymbia maculata</i> (Spotted Gum)	22.6	Good	Retain	
80287. <i>Corymbia maculata</i> (Spotted Gum)	22.10	Good	Retain	
80635. <i>Corymbia maculata</i> (Spotted Gum)	24.8	Good	Retain	
80174. <i>Corymbia maculata</i> (Spotted Gum)	22.7	Good	Retain	
80346. <i>Corymbia maculata</i> (Spotted Gum)	12.5	Good	Retain	
80492. <i>Corymbia maculata</i> (Spotted Gum)	9.5	Fair/Good	Retain	
80517. <i>Corymbia maculata</i> (Spotted Gum)	12.4	Fair/Good	Retain	
80571. <i>Corymbia maculata</i> (Spotted Gum)	20.7	Fair/Good	Retain	
80199. <i>Corymbia maculata</i> (Spotted Gum)	22.8	Good	Retain	
80396. Shrub not covered by Arborist Report			Retain	
80222. Shrub not covered by Arborist Report			Retain	
80373. <i>Corymbia maculata</i> (Spotted Gum)	17.6	Fair/Good	Retain	
80255. <i>Corymbia maculata</i> (Spotted Gum)	12.5	Fair/Good	Retain	
80367. Shrub not covered by Arborist Report			Retain	
80337. Shrub not covered by Arborist Report			Retain	
80544. <i>Corymbia maculata</i> (Spotted Gum)	16.4	Fair/Good	Retain	
80428. <i>Corymbia maculata</i> (Spotted Gum)	21.5	Good	Retain	
80228. Not found on Arborist Report			Retain	
80513. Shrub not covered by Arborist Report			Retain	
80194. Shrub not covered by Arborist Report			Retain	
80602. <i>Corymbia maculata</i> (Spotted Gum)	20.4	Fair/Good	Retain	
80401. Not found on Arborist Report			Retain	
80172. Shrub not covered by Arborist Report			Retain	
80341. Shrub not covered by Arborist Report			Retain	
80317. <i>Corymbia maculata</i> (Spotted Gum)	11.5	Good	Retain	
80462. <i>Corymbia maculata</i> (Spotted Gum)	12.5	Fair/Good	Retain	
80491. Shrub not covered by Arborist Report			Retain	
80514. Shrub not covered by Arborist Report			Retain	
80195. Shrub not covered by Arborist Report			Retain	
80634. <i>Corymbia maculata</i> (Spotted Gum)	22.6	Good	Retain	
80372. Not found on Arborist Report			Retain	

Existing Trees	H.S.	Condition	Action	Crown Projection
11580. <i>Acacia melanoxylon</i> (Blackwood)	5.3	Good	Remove	14.13m ²
11638. <i>Corymbia maculata</i> (Spotted Gum)	16.7	Fair/Good	Remove	61.328m ²
80543. Not found on Arborist Report			Retain	
80227. <i>Corymbia maculata</i> (Spotted Gum)	22.7	Good	Retain	
80257. Not found on Arborist Report			Retain	
80573. <i>Corymbia maculata</i> (Spotted Gum)	4.3	Good	Retain	
80572. <i>Corymbia maculata</i> (Spotted Gum)	22.4	Good	Retain	
80400. Not found on Arborist Report			Retain	
80256. <i>Corymbia maculata</i> (Spotted Gum)	17.3	Good	Retain	
80429. <i>Corymbia maculata</i> (Spotted Gum)	22.8	Good	Retain	
80503. <i>Corymbia maculata</i> (Spotted Gum)	18.2	Fair	Retain	
80266. Not found on Arborist Report			Retain	
80463. <i>Corymbia maculata</i> (Spotted Gum)	8.3	Fair	Retain	
80318. <i>Corymbia maculata</i> (Spotted Gum)	9.5	Fair/Good	Retain	

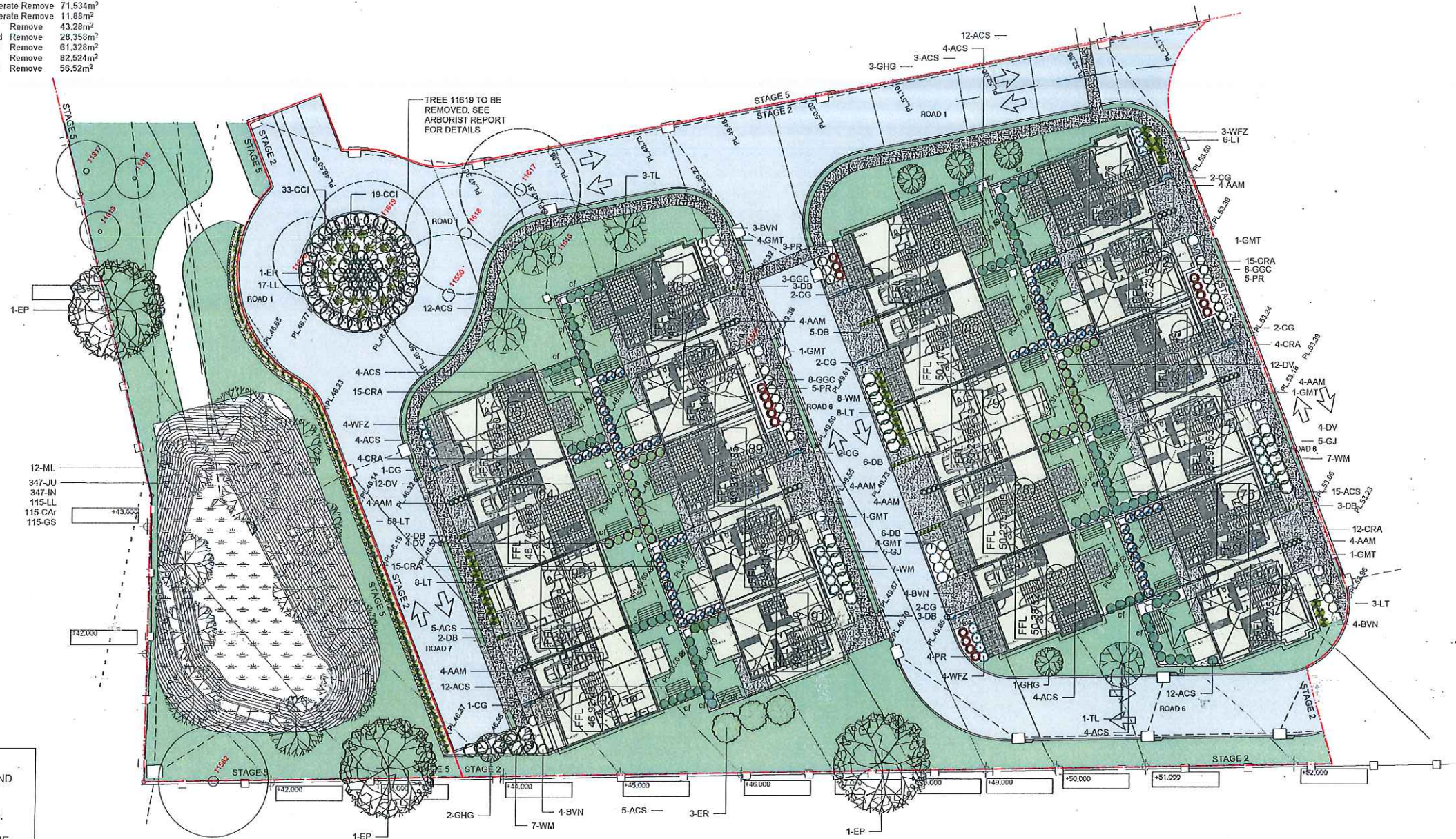
Please see Arborist Report by Treeology Pty Ltd dated 4th November 2014 for further details

NOTE: THE REMOVAL OF 3 TREES WITHIN STAGE 1 AND 6 IS PROPOSED, WITH A COMBINED CROWN PROJECTION OF 122.95m² AND REQUIRES COMPENSATORY PLANTING OF 7 STANDARD TREES.

32 TREES HAVE BEEN PROPOSED AS/FALL WITHIN THE DEFINITION OF COMPENSATORY PLANTING IN STAGE 1 AND 6

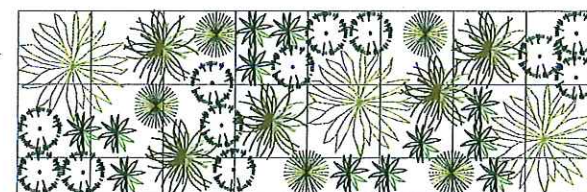
B PER COUNCIL RFI 12.10.15
 SNL
 Proposed Residential Development
 LAKE ROAD
 ELMORE VALE
 Landscape Plan - Stage 1 & 6
 MAY 2015
 1:250 @ A1 1/5
 LUBOV PARS
 SEARCH (LUBOV)
 US 41091 LP.018
 FORUM URBAN SANCTUM
 landscape design
 PO BOX 261 1 67 MARIONHILL ST 1 MARIONHILL NSW 2233
 T: 02 4951 4100 F: 02 4169 1282 E: info@forumsanctum.com.au
 A.B.N. 48 157 859 617

Existing Trees	H.S.	Condition	Action	Crown Projection
11817. Angophora floribunda (Rough Barked Apple Gum)	16,5	Fair/Good	Retain	
11818. Eucalyptus piperita (Sydney Peppermint)	14,4	Poor/Good	Retain	
11819. Eucalyptus acmenoides (White Mahogany)	9,4	Good	Retain	
11820. Cinnamomum camphora (Camphor Laurel)	8,4	Fair/Good	Remove	14.13m ²
11619. Angophora costata (Smooth Barked Red Gum)	22,10	Poor/Moderate	Remove	71.534m ²
11618. Eucalyptus globulosa (White Stringybark)	14,4	Poor/Moderate	Remove	11.88m ²
11617. Angophora costata (Smooth Barked Red Gum)	17,6	Good	Remove	43.28m ²
11616. Angophora costata (Smooth Barked Red Gum)	17,5	Poor/Good	Remove	28.358m ²
11550. Angophora costata (Smooth Barked Red Gum)	18,7	Fair/Good	Remove	61.328m ²
11551. Cinnamomum camphora (Camphor Laurel)	8,7	Good	Remove	82.524m ²
11582. Eucalyptus acmenoides (White Mahogany)	14,9	Fair/Good	Remove	56.52m ²

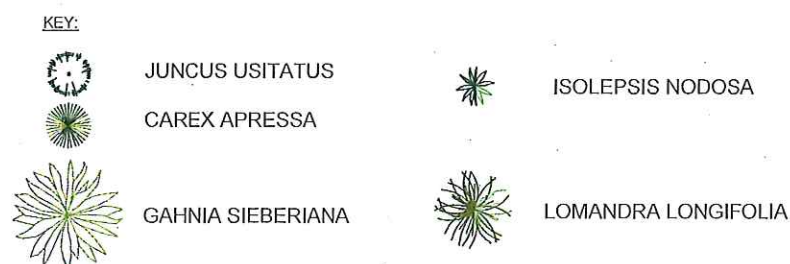


LANDSCAPE PLAN - STAGE 2 & 5 (PARTIAL)
Scale: 1:250

ID	Botanical Name	Common Name	Pot Size	Mature Height	Mature Spread	Qty	Remarks
Trees							
ER	Elaeocarpus reticulatus	Blueberry Ash	75L	5 - 10m	6-7m	3	Compensatory Planting
EP	Eucalyptus punctata	Grey Gum	45L	25 - 30m	6 - 10m	4	Compensatory Planting
ML	Melaleuca linariifolia	Bracelet Honey Myrtle	45L	8m	6m	12	Compensatory Planting
TL	Tristanopsis laurina	Water Gum	45L	6-8m	6m	4	Compensatory Planting
Shrubs							
AAM	Acmena 'Allyn's Magic'	Allyn's Magic	200mm	1m	1m	32	
ACS	Acmena 'Cherry Surprise'	Cherry Surprise	200mm	3m	1m	96	
BVN	Baeckia virgata nana	Dwarf Baeckia	200mm	1m	1m	15	
CRA	Callistemon 'Red Alert'	Red Alert	200mm	2 - 2.4m	1 - 2m	65	
DV	Dodonaea viscosa 'Purpurea'	Purple Hop Bush	200mm	3 - 5m	2.0 - 3.5m	32	
GJ	Grevillea australis 'Jubilee'	Jubilee Grevillea	200mm	1m	1m	10	
GHG	Grevillea 'Honey Gem'	Honey Gem	200mm	3 - 5m	3.5 - 6m	18	
GMT	Grevillea 'Mt Tamboritha'	Woolly Grevillea	140mm	0.3 - 0.45m	1.2 - 2.0m	13	
JU	Juncus usitatus	Common Rush	tube	0.3 - 0.45m	1.2 - 2.0m	347	
WFZ	Westringia fruticosa 'Zena'	Zena Compact Native Rosemary	200mm	1m	1m	11	
WM	Westringia mundi	Mundi	200mm	0.6m	1.5m	29	
Ground Covers							
CG	Carpobrotus glaucescens	Pigface	140mm	0.0 - 0.3m	1.2 - 2.0m	14	
CCI	Casuarina 'Cousin It'	Casuarina 'Cousin It'	200mm	0.6m	3 - 3.5m	52	
DB	Dianella 'Breeze'	Breeze	140mm	0.45 - 0.6m	0.6 - 0.9m	30	
GGC	Grevillea 'Gold Cluster'	Gold Cluster	200mm	0.6m	1m	19	
Grasses							
CAr	Carex appressa	Tussock Sedge	tube	1m	0.9 - 1.2m	115	
GS	Gahnia sieberiana	Sav Sedge	tube	1.5 - 2m	1.2 - 2.0m	115	
IN	Isolepis nodosa	Knobby Club Rush	tube	0.45 - 0.6m	0.6 - 0.9m	347	
LT	Lomandra 'Tanika'	Dwarf mat rush	140mm	0.45 - 0.6m	0.6 - 0.9m	83	
LL	Lomandra longifolia	Spiny-headed Mat-Rush	tube	0.75 - 0.9m	0.9 - 1.2m	132	
PR	Pennisetum 'Rubrum'	Purple Fountain Grass	140	0.5 - 0.75m	0.3 - 0.5m	17	



INDICATIVE PLANTING SET OUT - DRAINAGE BASIN
Scale: 1:100



NOTE: 2.5x8m SETOUT INDICATIVE OF PATTERN AND SPACINGS. PATTERN TO BE TESSELLATED OVER OVERLAND FLOW PATH AND FLIPPED/TURNED AS DESIRED TO GIVE VARIETY TO ADJOINING 2.5x8m AREAS. SETOUT ALL PLANTS BEFORE PLANTING. ADJUST NUMBERS TO GROUPINGS TO SUIT QUANTITIES ON PLANT SCHEDULE AS REQUIRED.

Legend

- Proposed Building
- Lawn
- Buried Road
- Concrete Path/Handstand
- Existing to be Retained
- Folding Clothes Line
- Stepping Stones
- 1.8m High Colourbond Privacy Fencing to Courtyards
- Extent of Open Rural (Post and Rail) style fencing. Retain Existing Trees in Good Condition
- Stage Boundaries
- Existing Trees to be Retained
- Existing Trees to be Removed

Scale 1:250

Project: B PER COUNCIL RFI 12.10.15

Client: SNL

Project: Proposed Residential Development LAKE ROAD ELMORE VALE

Drawn: Landscape Plan - Stage 2 & 5 (PARTIAL)

Date: MAY 2015

Scale: 1:250 @ A1

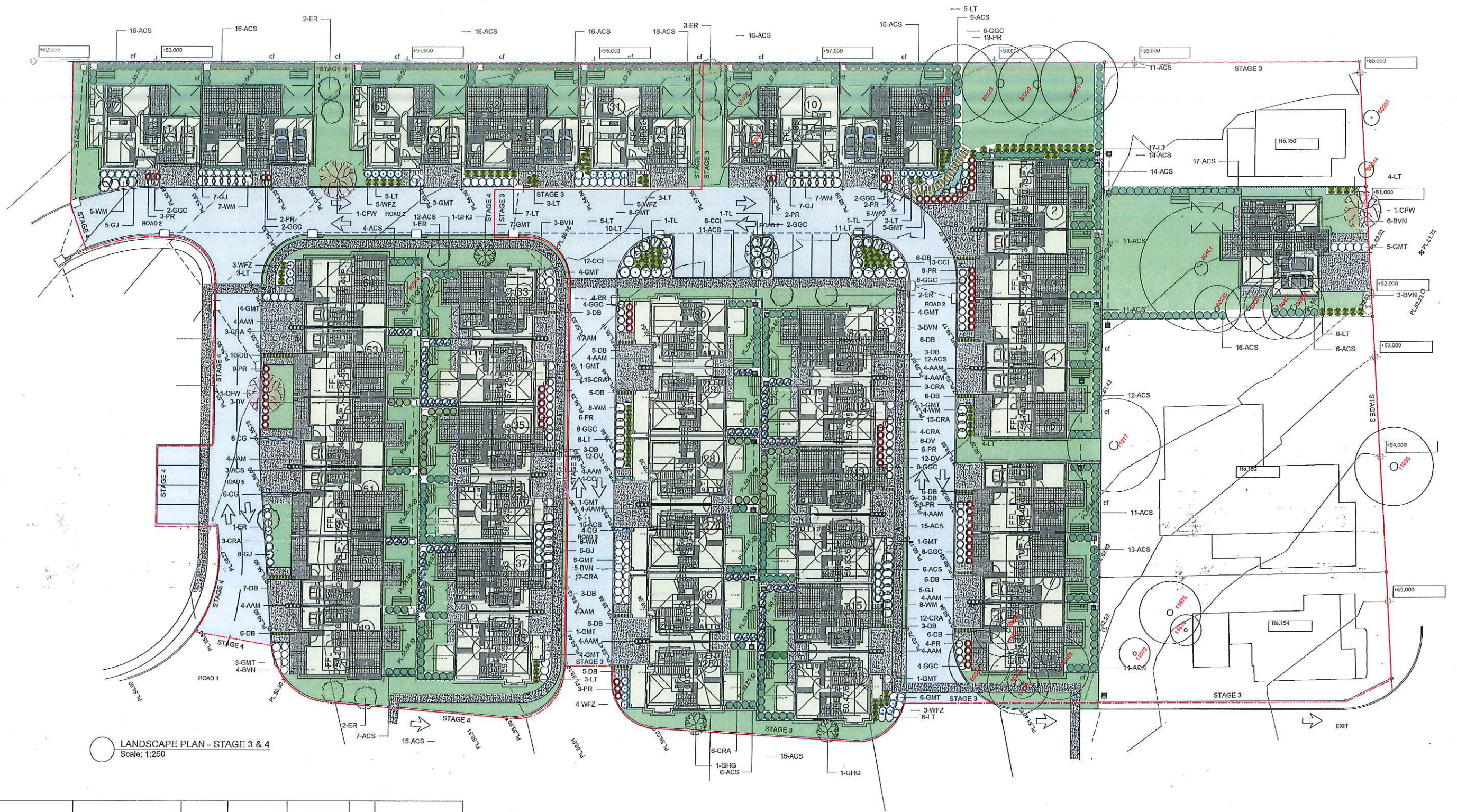
Page: 2/5

Drawn: LUYON PAIN BLANCH (UNSW)

Design: US 41091 LP.02B

FORUM URBAN SANCTUM landscape design

PO BOX 2611 67 MANCHESTER ST HAWTHORN VIC 3122
T: 02 4961 4100 F: 02 4961 1282 E: info@forumurbansanctum.com.au
A.B.N. 48 157 653 637



LANDSCAPE PLAN - STAGE 3 & 4
Scale: 1:250

ID	Botanical Name	Common Name	Pot Size	Mature Height	Mature Spread	Qty	Remarks
Trees							
CFW	Corymbia ficifolia 'Wildfire'	Dwarf Flowering Gum	75L	8m	6m	3	Compensatory Planting
ER	Elaeocarpus reticulatus	Blueberry Ash	75L	5 - 10m	6-7m	11	Compensatory Planting
TL	Tristanopsis laurina	Water Gum	45L	6-8m	6m	3	Compensatory Planting
Shrubs							
AAM	Acmena 'Allyn's Magic'	Allyn's Magic	200mm	1m	1m	60	
ACS	Acmena 'Cherry Surprise'	Cherry Surprise	200mm	3m	1m	389	
BNV	Baekea virgata nana	Dwarf Baekea	200mm	1m	1m	27	
CRA	Callistemon 'Red Alert'	Red Alert	200mm	2 - 2.4m	1 - 2m	73	
DV	Dodonaea viscosa 'Purpurea'	Purple Hop Bush	200mm	3 - 5m	2.0 - 3.5m	33	
GJ	Grevillea australis 'Jubilee'	Jubilee Grevillea	200mm	1m	1m	37	
GHG	Grevillea 'Honey Gem'	Honey Gem	200mm	3 - 5m	3.5 - 6m	3	
GMT	Grevillea 'Mt Tamboritha'	Woolly Grevillea	140mm	0.3 - 0.45m	1.2 - 2.0m	67	
WFZ	Westringia fruticosa 'Zena'	Zena Compact Native Rosemary	200mm	1m	1m	25	
WM	Westringia mundi	Mundi	200mm	0.6m	1.5m	47	
Ground Covers							
CG	Carpobrotus glaucescens	Pigface	140mm	0.0 - 0.3m	1.2 - 2.0m	42	
CCI	Casuarina 'Cousin It'	Casuarina 'Cousin It'	200mm	0.6m	3 - 3.5m	33	
DB	Dianella 'Breeze'	Breeze	140mm	0.45 - 0.6m	0.6 - 0.9m	100	
GGC	Grevillea 'Gold Cluster'	Gold Cluster	200mm	0.6m	1m	54	
Grasses							
LT	Lomandra 'Tanika'	Dwarf mat rush	140mm	0.45 - 0.6m	0.6 - 0.9m	102	
PR	Pennisetum 'Rubrum'	Purple Fountain Grass	140	0.6 - 0.75m	0.3 - 0.6m	72	

Existing Trees	H.S	Condition	Action	Crown Projection
80370. Not found on Arborist Report			Remove	
80198. Not found on Arborist Report			Remove	
80371. Syagrus romanzoffianum (Cocos Palm)	12.3	Good	Remove	14.13m ²
80542. Liquidambar styraciflua (Liquidamber)	6.3	Good	Remove	14.13m ²
80226. Liquidambar styraciflua (Liquidamber)	6.4	Good	Retain	
80399. Liquidambar styraciflua (Liquidamber)	6.4	Good	Retain	
80570. Liquidambar styraciflua (Liquidamber)	8.5	Good	Retain	
80251. Not found on Arborist Report			Retain	
80344. Not found on Arborist Report			Retain	
80481. Not found on Arborist Report			Retain	
80285. Pinus radiata (Monterey Pine)	6.2	Good	Retain	
80601. Pinus radiata (Monterey Pine)	7.3	Good	Remove	6.28m ²
80427. Pinus radiata (Monterey Pine)	10.3	Good	Remove	9.8m ²
80254. Pinus radiata (Monterey Pine)	9.3	Fair/Good	Remove	4.8m ²
11217. Eucalyptus acmenoides (White Mahogany)	15.7	Poor	Remove	4.8m ²
11217. Corymbia citridora (Lemon Scented Gum)	20.8	Good	Retain	
11035. Cedrus deodara (Himalayan cedar)	8.6	Fair/Good	Retain	
80569. Not found on Arborist Report			Remove	
11226. Not found on Arborist Report			Remove	
80541. Ficus benjamina (Weeping Fig)	5.3	Good	Remove	14.13m ²
80225. Not found on Arborist Report			Remove	
11732. Corymbia maculata (Spotted Gum)	12.6	Good	Remove	39.25m ²
80398. Corymbia maculata (Spotted Gum)	12.6	Good	Remove	39.25m ²
11673. Callistemon viminalis (Bottlebrush)	5.3	Good	Retain	
11675. Glochidion ferdinandii (Cheese Tree)	7.6	Good	Retain	
11674. Syagrus romanzoffianum (Cocos Palm)	10.2	Good	Retain	

Please see Arborist Report by Treeology Pty Ltd dated 4th November 2014 for further details

NOTE: THE REMOVAL OF 9 TREES WITHIN STAGE 3 AND 4 IS PROPOSED, WITH A COMBINED CROWN PROJECTION OF 146.57m² AND REQUIRES COMPENSATORY PLANTING OF 8 STANDARD TREES. FURTHERMORE, THERE ARE 5 ADDITIONAL TREES PROPOSED TO BE REMOVED WHICH ARE NOT FOUND ON THE ARBORIST REPORT.

19 TREES HAVE BEEN PROPOSED AS/FALL WITHIN THE DEFINITION OF COMPENSATORY PLANTING IN STAGE 3 AND 4

Legend

- Proposed Building
- Leam
- Blumen Road
- Concrete Path/Handstand
- Existing to be Retained
- Folding Clothes Line
- Stepping Stones
- 1.8m High Colorbond Privacy Fencing to Court/Yards
- Extent of Open rural (Post and Rail Wire) Style Fencing Retain Existing Where in Good Condition
- Timber Sleepers laid in Decorative Pebble Pave Gravel
- Stage Boundaries
- Existing Trees to be Retained
- Existing Trees to be Removed

Scale
1:250

Project Information

8 PER COUNCIL RFI 12.10.15

Site: SNL

Proposed Residential Development
LAKE ROAD
ELMORE VALE

Landscape Plan - Stage 3 & 4

DATE: MAY 2015

SCALE: 1:250 @ A1

Drawn by: EUBOY PAN

Checked by: BLANCH (UNSW)

US 41091 LP.03B

FORUM URBAN SANCTUM
landscape design

PO BOX 2611 47 MANICHELL ST 1 MANLY NSW 2209
T: 02 4961 4901 F: 02 4969 1282 E: admin@forumsanctum.com.au
A.B.N. 69 157 653 677

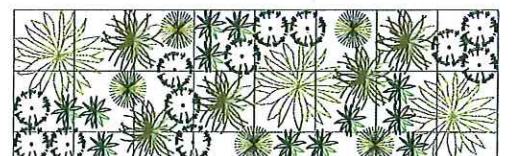
Existing Trees	H.S.	Condition	Action	Crown Projection
80196. Not found on Arborist Report			Retain	
80538. Not found on Arborist Report			Retain	
80368. Not found on Arborist Report			Retain	
80342. <i>Corymbia maculata</i> (Spotted Gum)	9.4	Good	Retain	
80316. <i>Corymbia maculata</i> (Spotted Gum)	21.9	Fair/Good	Remove	28.36m ²
80333. <i>Corymbia maculata</i> (Spotted Gum)	22.8	Good	Retain	
80316. <i>Corymbia maculata</i> (Spotted Gum)	21.9	Fair/Good	Retain	
80490. <i>Corymbia maculata</i> (Spotted Gum)	20.6	Fair/Good	Retain	
80159. <i>Eucalyptus punctata</i> (Grey Gum)	10.5	Good	Retain	
80281. <i>Corymbia maculata</i> (Spotted Gum)	12.1	Good	Retain	
80598. <i>Eucalyptus punctata</i> (Grey Gum)	15.10	Fair	Retain	
80599. Not found on Arborist Report			Retain	
80282. Not found on Arborist Report			Retain	
80425. <i>Corymbia maculata</i> (Spotted Gum)	20.7	Fair	Retain	
80252. <i>Corymbia maculata</i> (Spotted Gum)	20.8	Poor/Good	Retain	
80369. Not found on Arborist Report			Remove	14.13m ²
80197. <i>Cinnamomum camphora</i> (Camphor Laurel)	9.3	Good	Remove	
80539. Not found on Arborist Report			Remove	
80173. <i>Corymbia maculata</i> (Spotted Gum)	24.8	Good	Remove	88.312m ²
80223. <i>Cinnamomum camphora</i> (Camphor Laurel)	6.3	Good	Remove	14.13m ²
11839. <i>Eucalyptus punctata</i> (Grey Gum)	20.9	Fair	Retain	
11839. <i>Angophora costata</i> (Smooth Barked Red Gum)	19.8	Good	Retain	
11840. <i>Eucalyptus punctata</i> (Grey Gum)	17.8	Fair	Retain	
11814. <i>Eucalyptus acuminoides</i> (White Mahogany)	23.9	Good	Retain	
11816. <i>Eucalyptus globuloides</i> (White Stringybark)	9.6	Good	Retain	
11815. <i>Angophora costata</i> (Smooth Barked Red Gum)	20.5	Good	Remove	31.80m ²
80221. Shrub not covered by Arborist Report			Remove	
80395. Shrub not covered by Arborist Report			Remove	82.52m ²
80284. <i>Eucalyptus punctata</i> (Grey Gum)	18.9	Good	Remove	47.49m ²
80224. <i>Eucalyptus punctata</i> (Grey Gum)	18.14	Fair	Remove	207.63m ²
80397. <i>Eucalyptus punctata</i> (Grey Gum)			Remove	
80598. Not found on Arborist Report			Remove	
80600. <i>Eucalyptus punctata</i> (Grey Gum)	18.7	Fair	Retain	
80283. Not found on Arborist Report			Retain	
80253. <i>Eucalyptus punctata</i> (Grey Gum)	18.9	Fair	Retain	
80460. <i>Eucalyptus punctata</i> (Grey Gum)	18.7	Good	Retain	
11837. <i>Eucalyptus acuminoides</i> (White Mahogany)	10.5	Good	Retain	
11761. Not found on Arborist Report			Retain	
11760. <i>Corymbia gummifera</i> (Red Bloodwood)	20.8	Good	Retain	
11762. <i>Eucalyptus punctata</i> (Grey Gum)	22.10	Good	Retain	
11733. <i>Eucalyptus punctata</i> (Grey Gum)	22.8	Fair/Good	Retain	
11735. <i>Eucalyptus punctata</i> (Grey Gum)	22.8	Fair/Good	Retain	
11734. <i>Eucalyptus punctata</i> (Grey Gum)	23.11	Fair	Retain	
11676. <i>Eucalyptus acuminoides</i> (White Mahogany)	18.7	Good	Retain	
11615. <i>Cinnamomum camphora</i> (Camphor Laurel)	12.8	Good	Remove	66.33m ²
11614. <i>Angophora costata</i> (Smooth Barked Red Gum)	20.9	Good	Remove	76.53m ²
11613. <i>Eucalyptus globuloides</i> (White Stringybark)	8.5	Poor/Good	Remove	28.35m ²
11645. <i>Eucalyptus globuloides</i> (White Stringybark)	10.5	Good	Retain	
11644. <i>Cinnamomum camphora</i> (Camphor Laurel)	7.4	Good	Remove	22.07m ²
11642. <i>Eucalyptus globuloides</i> (White Stringybark)	10.5	Good	Remove	22.07m ²
11637. <i>Cinnamomum camphora</i> (Camphor Laurel)	10.1	Poor	Remove	0.05m ²
11638. <i>Cinnamomum camphora</i> (Camphor Laurel)	7.5	Good	Remove	39.25m ²
11639. <i>Eucalyptus acuminoides</i> (White Mahogany)	12.8	Good	Retain	
11640. <i>Cinnamomum camphora</i> (Camphor Laurel)	8.4	Fair/Good	Retain	
11641. <i>Cinnamomum camphora</i> (Camphor Laurel)	9.6	Good	Retain	

Please see Arborist Report by Treology Pty Ltd dated 4th November 2014 for further details

NOTE: THE REMOVAL OF 13 TREES WITHIN THE EASTERN PORTION OF STAGE 5 IS PROPOSED, WITH A COMBINED CROWN PROJECTION OF 791.57m² AND REQUIRES COMPENSATORY PLANTING OF 40 STANDARD TREES. FURTHERMORE, THERE ARE 3 ADDITIONAL TREES PROPOSED TO BE REMOVED WHICH ARE NOT FOUND ON THE ARBORIST REPORT.

55 TREES HAVE BEEN PROPOSED AS/FALL WITHIN THE DEFINITION OF COMPENSATORY PLANTING WITHIN THE EASTERN PORTION OF STAGE 5

ID	Botanical Name	Common Name	Pot Size	Mature Height	Mature Spread	Qty	Remarks
Trees							
CFW	<i>Corymbia ficifolia</i> 'Wildfire'	Dwarf Flowering Gum	75L	8m	6m	1	Compensatory Planting
ER	<i>Elaeocarpus reticulatus</i>	Blueberry Ash	75L	5 - 10m	6-7m	16	Compensatory Planting
EP	<i>Eucalyptus punctata</i>	Grey Gum	45L	25 - 30m	6 - 10m	11	Compensatory Planting
ML	<i>Melaleuca linariifolia</i>	Bracelet Honey-myrtle	45L	8m	6m	13	Compensatory Planting
TL	<i>Tristanopsis laurina</i>	Water Gum	45L	6-8m	6m	14	Compensatory Planting
Shrubs							
AAM	<i>Acmena 'Allyn's Magic'</i>	Allyn's Magic	200mm	1m	1m	33	
ACS	<i>Acmena 'Cherry Surprise'</i>	Cherry Surprise	200mm	3m	1m	260	
DE	<i>Doryanthes excelsa</i>	Gymea Lily, Giant Lily	200mm	1.5 - 3m	1.2 - 2.0m	42	
GJ	<i>Grevillea australis</i> 'Jubilee'	Jubilee Grevillea	200mm	1m	1m	17	
GHG	<i>Grevillea 'Honey Gem'</i>	Honey Gem	200mm	3 - 5m	3.5 - 6m	3	
GMT	<i>Grevillea 'Mt Tamborilha'</i>	Woolly Grevillea	140mm	0.3 - 0.45m	1.2 - 2.0m	116	
JU	<i>Juncus usitatus</i>	Common Rush	tube	0.3 - 0.45m	1.2 - 2.0m	1191	
SC	<i>Syzygium 'Cascade'</i>	Cascade	200mm	2 - 4m	2m	12	
WFZ	<i>Westringia fruticosa</i> 'Zena'	Zena Compact Native Rosemary	200mm	1m	1m	21	
Ground Covers							
CG	<i>Carpobrotus glaucescens</i>	Pigface	140mm	0.0 - 0.3m	1.2 - 2.0m	231	
DB	<i>Dianella 'Breeze'</i>	Breeze	140mm	0.45 - 0.6m	0.6 - 0.9m	221	
GGC	<i>Grevillea 'Gold Cluster'</i>	Gold Cluster	200mm	0.6m	1m	4	
Grasses							
CAr	<i>Carex apressa</i>	Tussock Sedge	tube	1m	0.9 - 1.2m	397	
DCB	<i>Dianella 'Cassa Blue'</i>	'Cassa Blue'	140mm	0.5m	0.4m	8	
GS	<i>Gahnia sieberiana</i>	Saw Sedge	tube	1.5 - 2m	1.2 - 2.0m	397	
IN	<i>Isolepis nodosa</i>	Knobby Club Rush	tube	0.45 - 0.6m	0.6 - 0.9m	1191	
LT	<i>Lomandra 'Tanika'</i>	Dwarf mat rush	140mm	0.45 - 0.6m	0.6 - 0.9m	110	
LL	<i>Lomandra longifolia</i>	Spiny-headed Mat-Rush	tube	0.75 - 0.9m	0.9 - 1.2m	397	
PR	<i>Pennisetum 'Rubrum'</i>	Purple Fountain Grass	140mm	0.6 - 0.75m	0.3 - 0.6m	26	



INDICATIVE PLANTING SET OUT - DRAINAGE BASIN
Scale: 1:100

KEY:			
	JUNCUS USITATUS		IOLEPIS NODOSA
	CAREX APRESSA		LOMANDRA LONGIFOLIA
	GAHNIA SIEBERIANA		

NOTE: 2.5x8m SETOUT INDICATIVE OF PATTERN AND SPACINGS. PATTERN TO BE TESSELLATED OVER OVERLAND FLOW PATH AND FLIPPED/TURNED AS DESIRED TO GIVE VARIETY TO ADJOINING 2.5x8m AREAS. SETOUT ALL PLANTS BEFORE PLANTING. ADJUST NUMBERS TO GROUPINGS TO SUIT QUANTITIES ON PLANT SCHEDULE AS REQUIRED.

LANDSCAPE PLAN - STAGE 5
Scale: 1:300

Scale: 1:300

B PER COUNCIL RFI		12.10.15
SNL		
Proposed Residential Development LAKE ROAD ELMORE VALE		
Landscape Plan - Stage 5		
MAY 2015		
1:300 @ A1		4/5
Drawn by Lufon Pan BEARCH (UNSW)	Designed by US 41091 LP.04B	
PO BOX 2611 1 67 MANICHAEL ST 1 MOREVALE NSW 2293 T: 02 4961 4880 F: 02 4969 1082 E: info@forumurban.com.au A.B.N. 48 157 853 677		

LANDSCAPE WORK SPECIFICATION

Project:

PRELIMINARIES

1.01 GENERAL

The following general conditions should be considered prior to the commencement of landscape works:

The landscape plans should be read in conjunction with the architectural plans, hydraulic plans, service plans and survey prepared for the proposed development.

All services including existing drainage should be accurately located prior to the commencement of landscape installation. Any proposed tree planting which falls close to services will be relocated on site under the instruction of the landscape architect.

Installation of conduit for required irrigation, electrical and other services shall be completed prior to the commencement of hardscape works and hardstand pours.

All outdoor lighting specified by architect or client to be installed by qualified electrician. Anomalies that occur in these plans should be brought to our immediate attention.

Where an Australian Standard applies for any landscape material testing or installation technique, that standard shall be followed.

1.02 PROTECTION OF ADJACENT FINISHES

The Contractor shall take all precautions to prevent damage to all or any adjacent finishes by providing adequate protection to these areas / surfaces prior to the commencement of the Works

1.03 PROTECTION OF EXISTING TREES

Existing trees identified to be retained shall be done so in accordance with AS 4970-2009. Where general works are occurring around such trees, or pruning is required, a qualified Arborist shall be engaged to oversee such works and manage tree health. Existing trees designated on the drawing for retention shall be protected at all times during the construction period. Any soil within the drip-line of existing trees shall be excavated and removed by hand only. No stockpiling shall occur within the root zone of existing trees to be retained.

Any roots larger in diameter than 50mm shall only be severed under instruction by a qualified arborist. Roots smaller than 50mm diameter shall be cut cleanly with a saw.

1.8m high temporary fencing shall be installed around the base of all trees to be retained prior to the commencement of landscape works. The location of this fencing will be as per the TPZ defined by the consulting Arborist. If no Arborists report is available, install fence around the drip line of these trees, or a minimum of 3m from the trunk. The fencing shall be maintained for the full construction period.

1.04 EROSION & POLLUTION CONTROL

The Contractor shall take all proper precautions to prevent the erosion of soil from the subject site. The contractor shall install erosion & sediment control barriers and as required by council, and maintain these barriers throughout the construction period. Note that the sediment control measures adopted should reflect the soil type and erosion characteristics of the site.

Erosion & pollution control measures shall incorporate the following:

- Construction of a sediment trap at the vehicle access point to the subject site.
- Sediment fencing using a geotextile filter fabric in the location indicated on the erosion control plan or as instructed on site by the landscape architect.
- Earth banks to prevent scour of stockpiles
- Sandbag korb sediment traps
- Straw bale & geotextile sediment filter.
- Exposed banks shall be pegged with an approved Jute matting in preparation for mass planting

Refer to "Sitewise Reference Kit" as prepared by DLWC & WSROC (1997) for construction techniques

SOIL WORKS

2.01 MATERIALS

Specified Soil Conditioner - (mass planting in natural ground)

The specified soil conditioner for mass planting shall be an organic mix, equal to "Soil conditioner", as supplied by Oz Landscaping Supplies. Note that for sites where soil testing indicates toxins or extremes in pH, or soils that are extremely poor, allow to excavate and supply 300mm of imported soil mix.

Specified Soil Mix - Turf

The specified soil mix for all turf areas shall be a min 75mm layer of imported soil mix consisting of 80% washed river sand (reasonably coarse), and 20% composted organic matter equivalent to mushroom compost or soil conditioner, or other approved lawn top dress.

Site Topsoil

Site topsoil is to be clean and free of unwanted matter such as gravel, clay lumps, grass, weeds, tree roots, sticks, rubbish and plastics, and any deleterious materials and materials toxic to plants. The topsoil must have a pH of between 5.5 and 7.

2.02 INSTALLATION

a) Testing

All testing is to be conducted in accordance with AS 4419-2003 Soils for landscaping and garden use for an in depth soil analysis for pre-planting and diagnostic assessment of the soil. Tests shall be taken in several areas where planting is proposed, and site soil modified to ensure conditions are appropriate for planting as stated above.

Note that a soil test conducted by "SESAL Australia" or approved equal shall be prepared for all commercial, industrial and multi-unit residential sites. The successful landscape contractor shall implement the recommendations of this test.

b) Set Out of Individual Trees & Mass Planting Areas

All individual tree planting positions and areas designated for mass planting shall be set out with stakes or another form of marking, ready for inspection and approval. Locate all services.

c) Establishing Subgrade Levels

Subgrade levels are defined as the finished base levels prior to the placement of the specified material (i.e. soil conditioner). The following subgrade levels shall apply:

Mass Planting Beds - 300mm below existing levels with specified imported soil mix.

Turf areas - 100mm below finished surface level.

Note that all subgrades shall consist of a relatively free draining natural material, consisting of site topsoil placed previously by the Civil Contractor. No builders waste material shall be acceptable.

d) Subgrade Cultivation

Cultivate all subgrades to a minimum depth of 150mm in all planting beds and all turf areas, ensuring a thorough breakup of the subgrade into a reasonably coarse filth. Grade subgrades to provide falls to surface and subsurface drains, prior to the placement of the final specified soil mix.

e) Drainage Works

Install surface and subsurface drainage where required and as detailed on the drawing. Drain subsurface drains to outlets provided, with a minimum fall of 1:100 to outlets and / or service pits.

f) Placement and Preparation of Specified Soil Conditioner & Mixes.

Trees in turf & beds - Holes shall be twice as wide as root ball and minimum 100mm deeper - backfill hole with 50/50 mix of clean site soil and imported "Organic Garden Mix" as supplied by Oz Landscaping Supplies or approved equal.

Mass Planting Beds - Install specified soil conditioner to a compacted depth of 100mm. Place the specified soil conditioner to the required compacted depth and use a rotary hoe to thoroughly mix the conditioner into the top 300mm of garden bed soil. Ensure thorough mixing and the preparation of a reasonably fine filth and good growing medium in preparation for planting.

Turf Areas - Install specified soil mix to a minimum compacted depth of 75mm. Place the specified soil mix to the required compacted depth and grade to required finished soil levels, in preparation for planting and turfing.

PLANTING

3.01 MATERIALS

a) Quality and Size of Plant Material

In General, the principles & standards outlined in "Specifying Trees - a guide to assessment of tree quality" by Ross Clark will be demanded in the quality of all planting stock specified. These principles include, but are not limited to:

Above - Ground Assessment:

The following plant quality assessment criteria should be followed:

Plant true to type, Good vigour and health, free from pest & disease, free from injury, self-supporting, good stem taper, has been pruned correctly, is apically dominant, has even crown symmetry, free from included bark & stem junctions, even trunk position in pot, good stem structure

Below - Ground Assessment:

Good root division & direction, rootball occupancy, rootball depth, height of crown, non-suckering

For further explanation and description of these assessment criteria, refer to Ross Clark's book.

All Plant material shall be to the type and size specified. No substitutions of plant material shall be permitted without written prior approval by the Landscape Architect. No plant shall be accepted which does not conform to the standards listed above.

b) Fertilizers

Fertilizers shall be approved slow release fertilisers suitable for the proposed planting types. Note that for native plants, specifically Proteaceae family plants including Grevillea species, low phosphorus fertilizers shall be used.

c) Mulch

Mulch shall be leaf litter mulch equal to "Forest Blend" as supplied by ANL. Mulch shall be completely free from any soil, weeds, rubbish or other debris.

d) Turf

Turf shall be "Sir Walter" Buffalo or equivalent (unless stated otherwise), free from any weeds and other grasses, and be in a healthy growing condition.

3.02 INSTALLATION

a) Setting Out

All planting set out shall be in strict accordance with the drawings, or as directed. Note that proposed tree planting located near services should be adjusted at this stage. Notify Landscape Architect for inspection for approval prior to planting.

b) Planting

All plant material shall be planted as soon after delivery as possible. Planting holes for trees shall be excavated as detailed and specified. Plant containers shall be removed and discarded, and the outer roots gently teased from the soil mass. Immediately set plant in hole and backfill with specified soil mix, incorporating the approved quantity of fertiliser for each plant type. Ensure that plants are set plumb vertically and root balls set to the consolidated finished grades detailed on the drawings. Compact the backfilled soil and saturate by hand watering to expel any remaining air pockets immediately after planting.

c) Staking and Tying

Trees shall be of a quality that, when planted, are freestanding, without the aid of stakes or ties, else they will be rejected.

d) Mulching

Mulch should be spread so that a compacted thickness of 75mm is achieved after settlement in all planting beds and around each individual plant. Apply immediately following planting and watering in, ensuring that a 50mm radius is maintained around the trunk of each plant. In all planter boxes, mulch to finish between 25-50mm below top of planter. There shall be no mixing of soil and mulch material.

e) Turfing

Moisten soil prior to the turf being laid. Turf shall be neatly cut jointed and true to grade to finish flush with adjacent surfaces. Incorporate a lawn fertilizer and thoroughly water in. Keep turf moist until roots have taken and sods/rolls cannot be lifted. Keep all traffic off turf until this has occurred. Allow for top dressing of all turf areas. All turf shall be rolled immediately following installation.

f) Garden edging

The Contractor shall install garden edging to all mass planting beds adjoining turf or gravel mulched areas, and where required. The resultant edge shall be true to line and flush with adjacent surfaces.

Garden Edging: to be Treated Fine Timber edging (Unless otherwise specified by Client).

g) Root Barrier

Ensure root barrier is installed to all edges/junctions between the garden bed and adjacent hard surfaces including but not limited to retaining walls, carparking, paths, underground pipes and tanks and buildings within a 3m radius of the trunk of any proposed trees.

Root barrier: Equivalent to treemax root barrier. Install root barrier to manufacturer's instructions.

h) Stepping Stones

Precast concrete slabs of 400-500mm SQ (or similar approved dimensions) shall be placed as indicated on plan at 200mm intervals. Finish and colour of stepping stones shall be nominated by the client. Install stepping stones as detail, flush with adjoining elements. Compact area under stepping stones locally where stepping stones occur in garden areas and generally where stepping stones occur in pea gravel/decorative pebble areas

i) Pea Gravel/Decorative Pebble

Compact area for pea gravel and Decorative Pebble installation with vibrating plate compactor before installation of pea gravel or Decorative Pebble.

Gravel/Pebbles are to be installed loose to the gap between the installed stepping stones. They are to finish flush with the adjacent paved surface and be topped up should they settle after installation. At the edges of a stepping stone and gravel/pebble area the gravel/pebble is to be retained by a garden edge.

Gravel Inlays: Equivalent to 10mm Indo Cream pea gravel.

Pebbles: Equivalent to 20mm Indo Cream Pebble

HARDSCAPE WORKS

4.01 GENERAL

The Contractor shall undertake the installation of all hardscape works as detailed on the drawing, or where not detailed, by manufacturers specification.

Paving - refer to typical details provided, and applicable Australian Standards.

Permeable paving may be used as a suitable means of satisfying Council

permeable surface requirements, while providing a useable, hardwearing,

practical surface. In most instances, the client shall nominate the appropriate

paving material to be used.

Planters on-slab - refer to the details provided and the architectural plans for size & dimensions. Waterproof as detailed, and backfill with specified soil mix.

Australian Standards shall be adhered to in relation to all concrete, masonry & metal work. Some details are typical and may vary on site. All hardscape works shall be setout as per the drawings, and inspected and approved by the Landscape Architect prior to installation. All workmanship shall be of the highest standard. Any queries or problems that arise from hardscape variations should be brought to the attention of the Landscape Architect.

IRRIGATION WORKS

5.01 GENERAL (PERFORMANCE SPECIFICATION)

New irrigation systems to planting areas shall be a Commercial Grade Irrigation System

conforming to AS 3500 & the latest Sydney Water Code

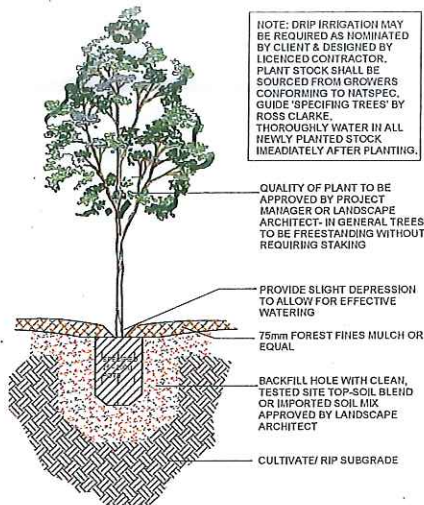
The irrigation system shall be installed prior to all planting works. It shall incorporate a commercially available irrigation system, with dripper lines for all trees, and suitable jet

sprinkler heads for the shrub species specified. It shall also incorporate a suitable back flow

prevention device for the scale of works, an in-line filter, check valves, and suitable high and

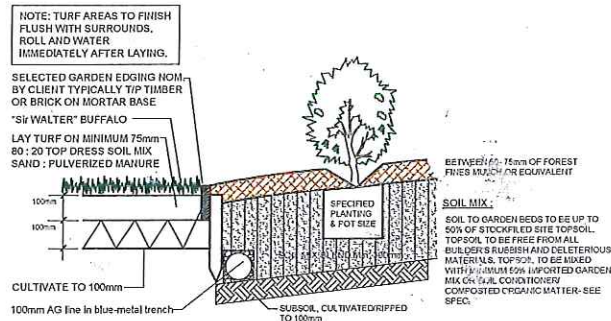
low density poly hose fillings and PVC piping to achieve flow rates suitable for specified

planting.



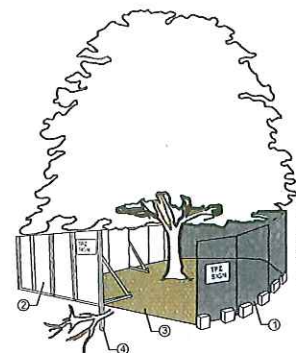
INDIVIDUAL TREE PLANTING DETAIL

approx 1:10



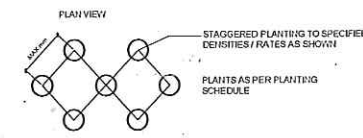
TYPICAL TURFING & GARDEN PREPARATION WITH GARDEN EDGE

n.t.s



TREE PROTECTION ZONE

approx 1:10



PLANTING SET OUT

n.t.s

0m 5m 10m
SCALE 1:200

SYD		SNL	
Proposed Residential Development LAKE ROAD ELMOREVALE			
Details and Spec Sheet		5/5	
Date: MAY 2015		Rev: 5/5	
Scale: 1:200 @ A1		Project: US 41091 LP.05	
Drawn by: Lubov Pan BLARCH (UNSW)		Checked by: US 41091 LP.05	
FORUM URBAN SANCTUM landscape design			
PO BOX 551 47 HUNTER STREET HUNTERVILLE NSW 2237 T: 02 4931 4550 F: 02 4931 4242 E: admin@forumus.com.au A.B.N. 49 103 631 677			